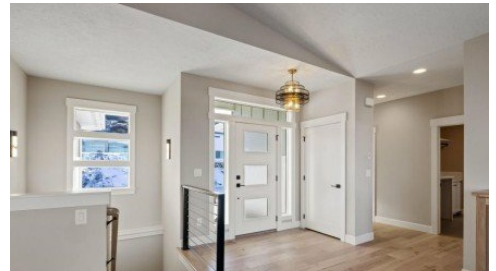


16933 E 15th Ln
Spokane Valley, WA 15



Powered by homes.spokesman.com

MLS# 202525055



\$1,169,900

5 Bedrooms | 4 Bathrooms | 3,602 Sqft

Monterra ? South Valleys newest upscale gated community with exceptional views! The Chinook plan by Paras Homes features main-floor living, including a primary suite and laundry facilities. The daylight basement includes a 2nd primary suite, 2 bedrooms, and a full bath. Kitchen features custom cabinets, a large island, quartz countertops, and a walk-in pantry. Spacious primary suite with walk-in mudset shower. Covered deck and patio provide great outdoor living and spectacular views from the back of the house. Oversized garage with room for a shop. Top-quality craftsmanship inside and out. Estimated completion: late December. This single family home located at 16933 E 15th Ln, Spokane Valley, WA 99037 is currently listed for sale by Coldwell Banker Tomlinson, with an asking price of \$1,169,900. This property was built in 2025 and has 5 bedrooms with 3602 sq. ft. E 15th Ln is located in the Monterra subdivision within the Central Valley school district. Search on today. Listed By



Spokane Office

Phone: (509) 467-7400

Coldwell Banker Tomlinson

Office: (509) 467-7400

For full listing details, please scan:

