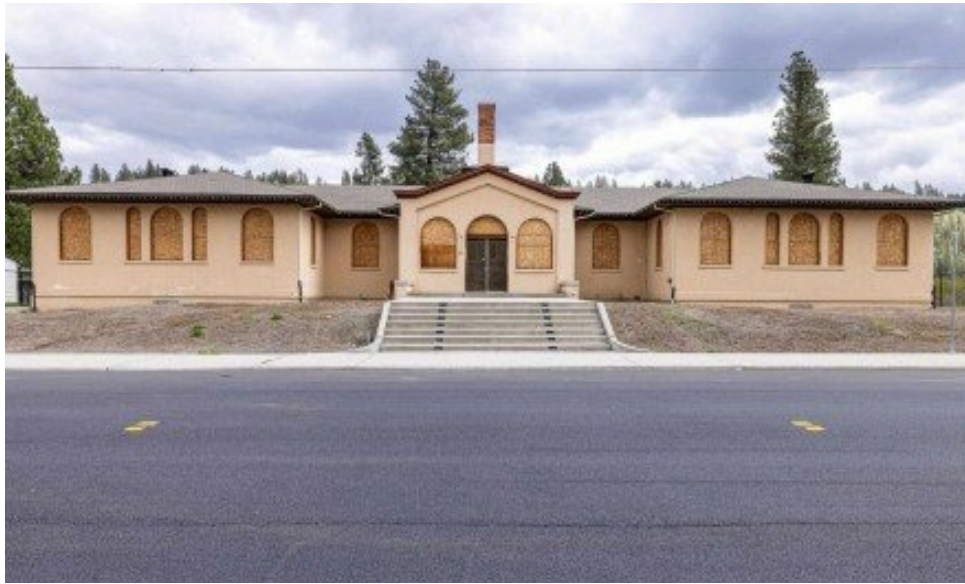


2225 S Inland Empire Way
Spokane, WA



Powered by **homes.spokesman.com**

MLS# 202517584



\$1,825,000

2 Bathrooms | 5,956 Sqft

Introducing the iconic Lowell School. This building zoned multi uses, including retail, residential & commercial. Check with city planning and verify all the allowed uses. Building is roughed in & ready for your business ideas. Don't miss your chance to be part of this extraordinary chapter in Spokane's story. Step inside, you'll discover a treasure trove of original details that speak to the schoolhouse's rich history. From the elegant arched multi-paned interior vestibule windows to the built-in storage cupboards, every corner exudes craftsmanship & character. Thick plaster walls adorned w/rounded molded-plaster corners & beveled molded-plaster window sills further enhance the building's unique charm. Improvements are newer roof, all plumbing roughed in, electrical, dry sprinkler system, and much more. For those seeking a truly special opportunity to make their mark on Spokane's landscape, this property beckons w/ endless possibilities. Ask for List of updates that are available.



Khalil Beznaiguia

Phone: (509) 475-2802

Windermere Manito LLC

Office: (509) 747-1051

For full listing details, please scan:

